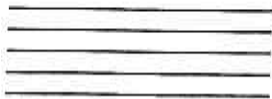


Note Reading Lesson 1

The Staff and Clefs



Name _____



This is a _____. This is where all musical notes are written. It consists of 5 **lines** and 4 **spaces**.



This is a _____ clef.

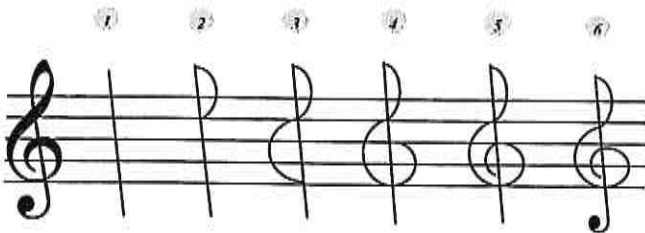


This is a _____ clef.

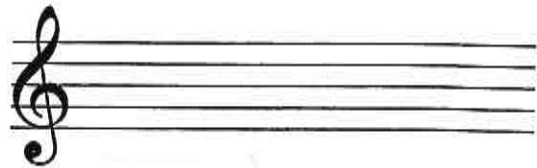
My instrument, _____, plays notes written in the _____ clef.

Drawing Clefs

Let's practice drawing the treble clef. Trace these six steps here.



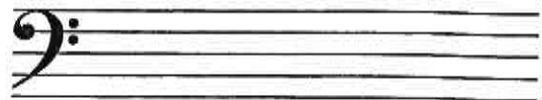
Draw four more treble clefs on the staff below.



Now let's practice drawing the bass clef. Trace these four steps here.



Draw four more bass clefs on the staff below.



Line Notes vs. Space Notes

The staff is made up of 5 lines and 4 spaces. We begin counting from the bottom line/space and count up as shown below.

LINE NOTES

L1 L2 L3 L4 L5

SPACE NOTES

S1 S2 S3 S4

LINE NOTES: Draw your clef at the beginning of the line. Write the line number below the note.

1.

SPACE NOTES: Draw your clef at the beginning of the line. Write the space number below the note.

2.

MIXED UP: Draw your clef at the beginning of the line. Decide if it is a line note ("L") or space note ("S"). Write the line number below the note.

3.