

# Note Reading Lesson 2

## The Musical Alphabet



Name \_\_\_\_\_

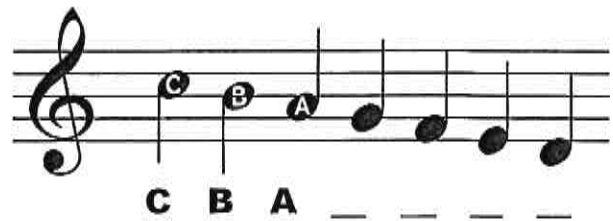
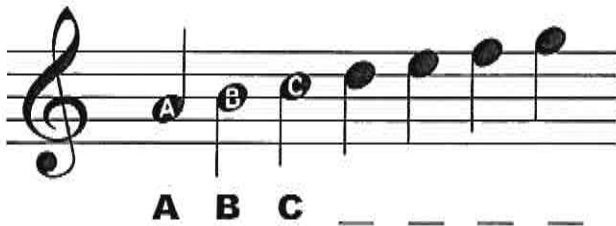
### The Musical Alphabet

All notes are labeled with letters called the *musical alphabet*. The musical alphabet uses the 1<sup>st</sup> 7 letters of the English alphabet. Notes move forward (notes up the staff) in alphabetical order: A B C D E F G or backwards (notes down the staff): G F E D C B A. *The notes just simply repeat themselves over and over in either direction:*

A B C D E F G A B C D E F G A B C D E F G



Can you finish the following sequences?:



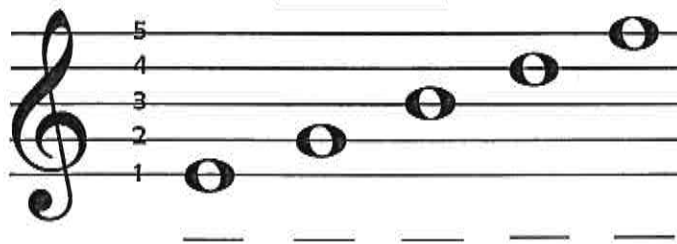
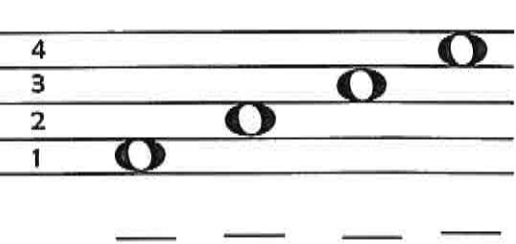
# Helpful Phrases

Notes on the staff are either **line notes** or **space notes**. For line notes, a line of the staff goes *through* the note. Space notes are notes that sit *between* staff lines. Sometimes we can use phrases or words to help us remember the alphabet note name.

A phrase to remember the **LINE NOTES** is:  
 \_\_\_\_\_

A word/phrase to remember the **SPACE NOTES** is: \_\_\_\_\_

Starting from the bottom (line 1 or space 1), take the first letter of each word in your helpful phrase above and write it on the line below the note. This is the note name for that note.

<u>LINE NOTES</u>	<u>SPACE NOTES</u>
	

**LINE NOTES:** Draw your clef at the beginning of the line. Using the line note "helpful phrase", write the note name below the note.

1. 

**SPACE NOTES:** Draw your clef at the beginning of the line. Using the space note "helpful phrase", write the note name below the note.

2. 

**MIXED UP:** Draw your clef at the beginning of the line. Decide if you need to use the line note or space note "helpful phrase". Write the note name below the note.

3. 